

Gran Turismo 35



Gran Turismo 35

INTRODUCTION	EXTERIOR	INTERIOR	INNOVATIONS
Specifications	Key points	Salon / Cabin	Innovations
Side Elevation	Galley	Head	TECHNICAL
Layout	Dimensions	Mid Cabin	Mooring kit
Key points	Wheelhouse	Dimensions	Technical equipment
	Dimensions	Headroom	Outlets
			Air Conditioning
			Audiovisual
			Air draft
			Performances



SPECIFICATIONS

PROVISIONAL SPECS

MAIN SPECIFICATIONS	DATA	
Length Overall	11,20m	36'9"
Hull Length	9,78m	32'1"
Overall Beam	4,65m	15'3"
Water Draft (full load)	1,09m	3'7"
Air Draft (included radar support, light load)	4,26m	13'12"
Light Displacement	5,336 kg	11 761 lbs
Berths	2_2	
EC Certification	B8 / C10	
Architect	Michael Peters Yacht Design	
Designer	Andreani Design	

CAPACITY



Fuel

2 x 370 L (Standard)
2 x 98 US gal (Standard)



Water

160 L
42 US gal



Water hot tank

25 L
7 US gal



Black water tank

80 L
21 US gal

MOTORISATION / PERFORMANCE

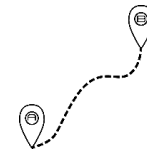


OB : 2 X 350 HP



Speed Max

41 kts
Provisional specs

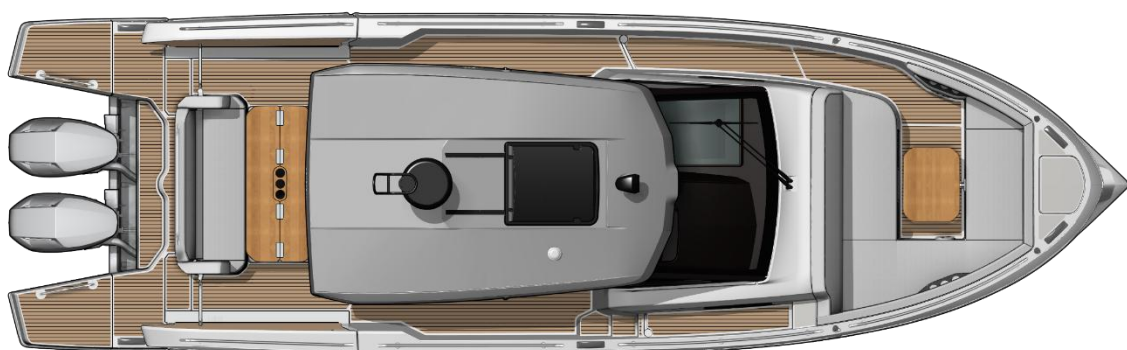
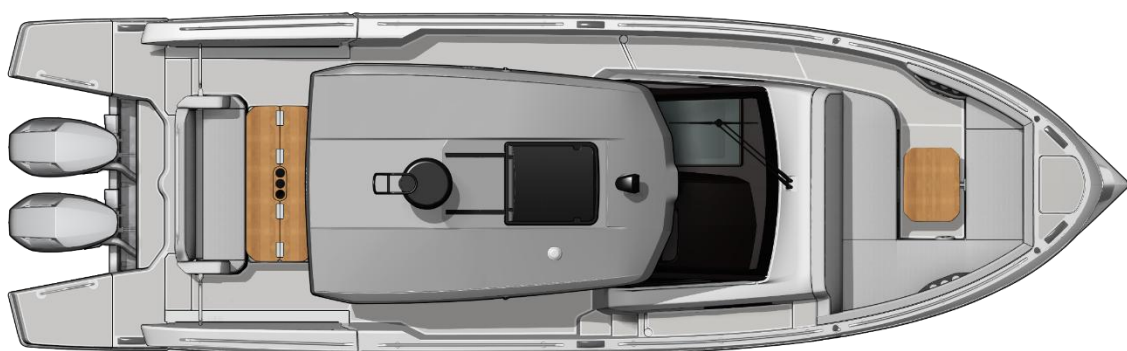
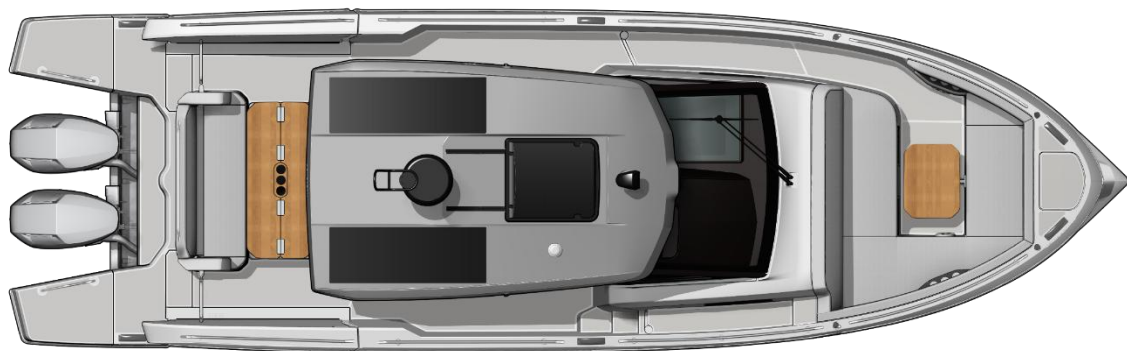


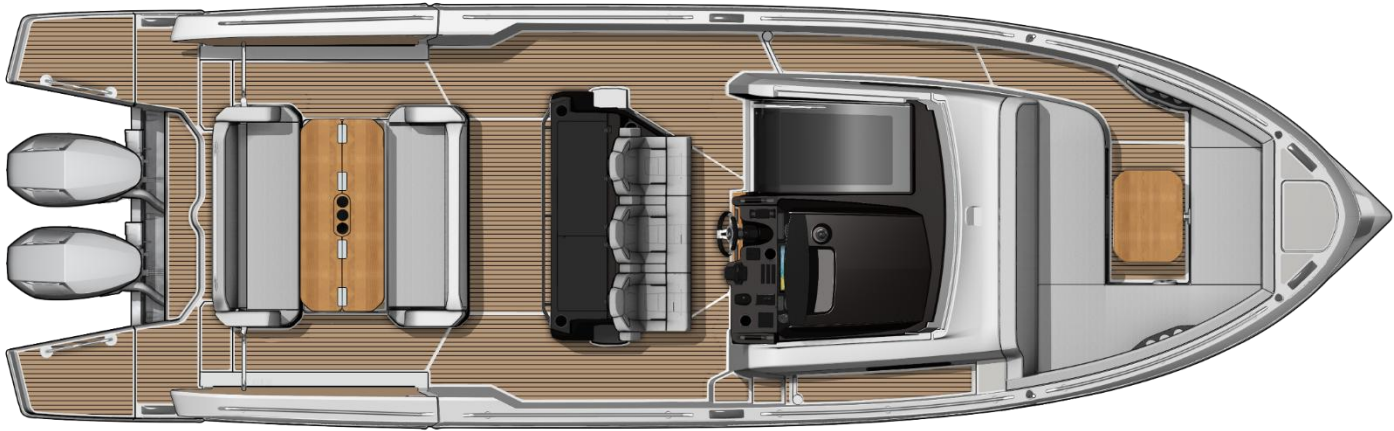
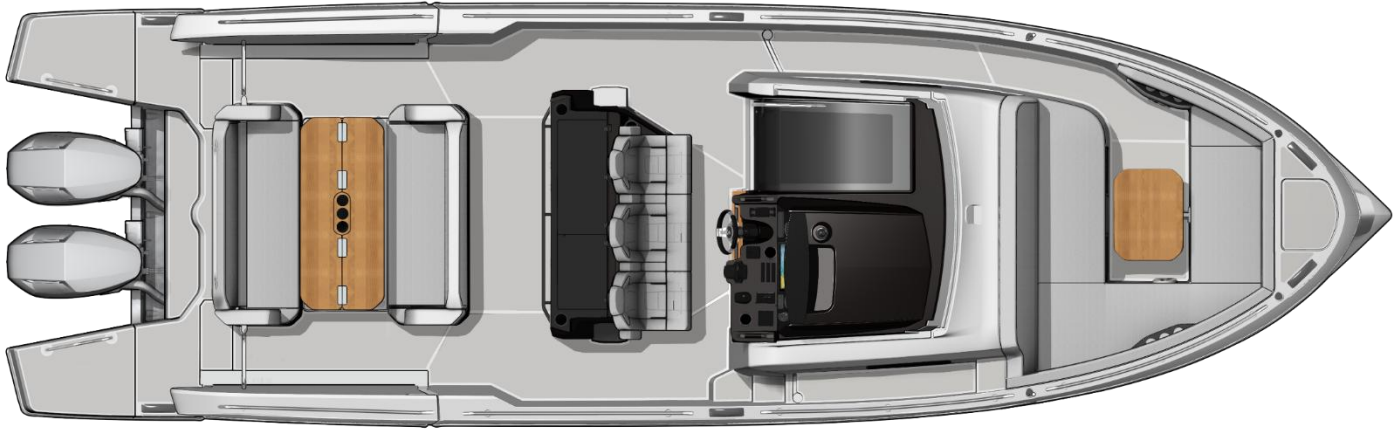
Autonomy

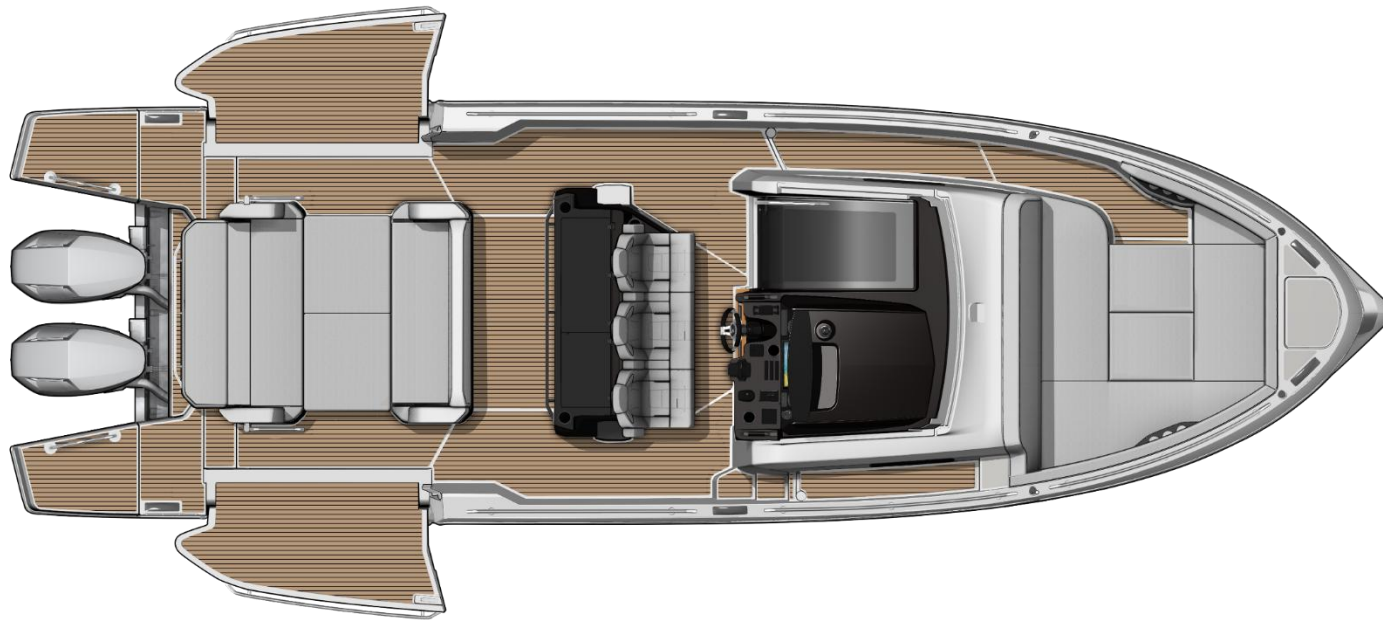
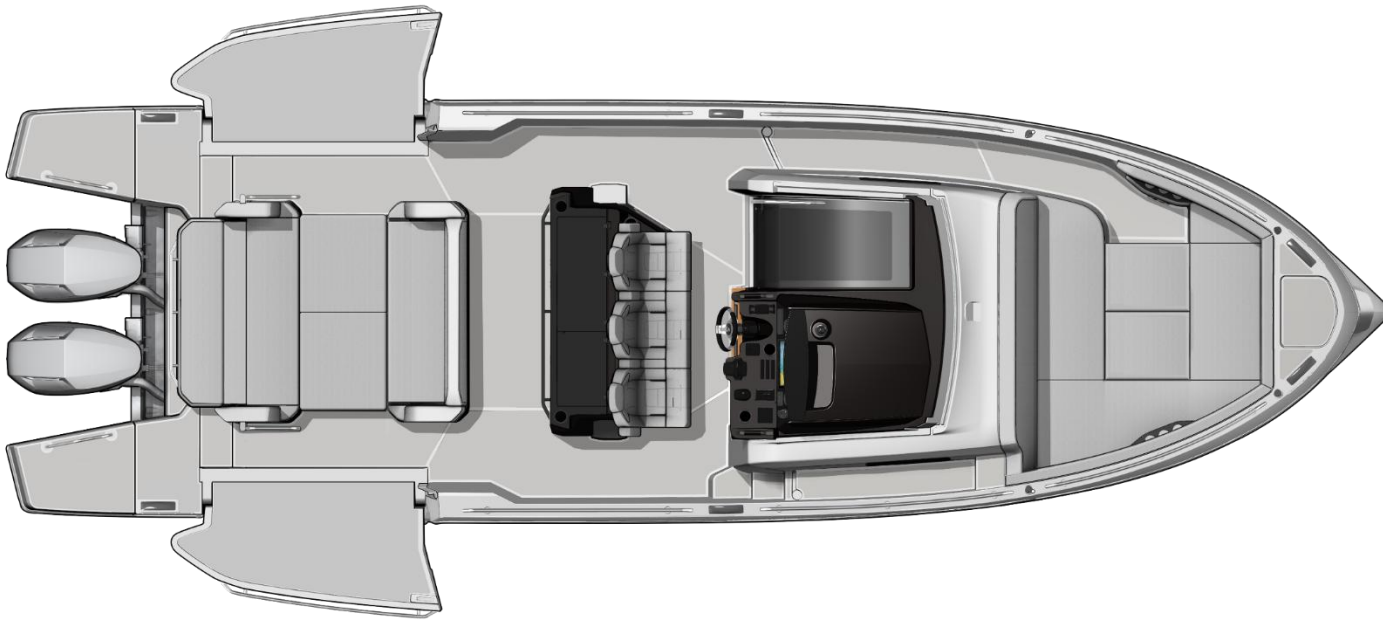
nm @ knots
(*10% fuel reserve)

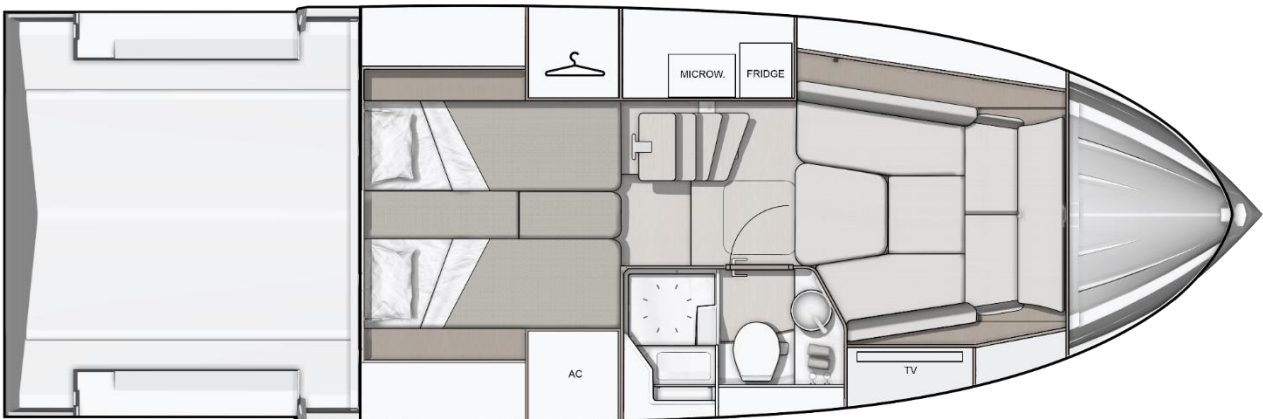
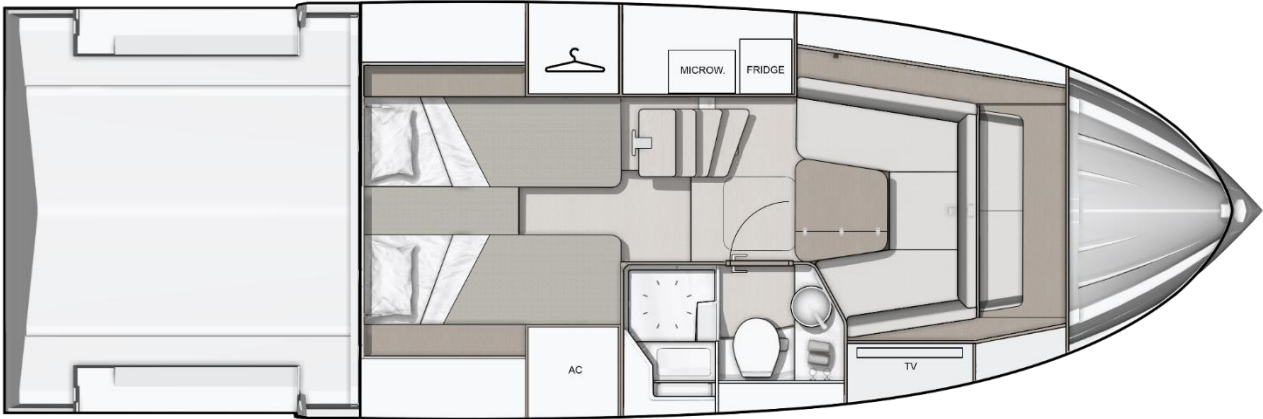
*10% fuel reserve, zero sea state, clean hull & drivetrain











Gran Turismo - KEY RANGE SELLING POINTS

VILLA LIVING

Increased exterior space for a better user experience

OPTIMUM DRIVE

Deliver an enhanced sports focus driving experience

STYLE & ELEGANCE

« Design to be remarkable » : powerful design profile and lines that build a strong, purposeful identity



The new Gran Turismo range has been created following these Japanese design philosophies :

Interior Kanso (simplicity) :

calm interior spaces with ambient lighting and surfaces

Exterior Yugen (gracefulness) :

The elegant low profile shape & styling allows a calm well proportioned presence on the water

- Purposeful clean and graceful exterior lines – following Yugen philosophy
- Safe & easy circulation – safe passage in front of outboards (No pit of cables)
- Socializing exterior layout :
 - 2 large salons : one in the cockpit one at foredeck both with sunpad conversion
 - full equipped exterior galley
 - opened on sea : 2 large side balconies
 - optimized protection : T-TOP and full windshield
- A comfortable interior :
 - Stylish lounge , with bar & entertainment
 - Bathroom with separate shower cubicle
 - Mid cabin with berth
- Gyro stabiliser option
- Optional « Silent yacht » Solar panels & Lithium Batterie

EXTERIOR



Exterior - Key Points

Optional telescopic shade

Manual or electrical
opening roof

Face to face cockpit seat
with orientable backrest

Hidden electric socket,
water and fuel inlet

Large aft platform
winglets

Large folding cockpit table on twin electric legs

Exterior - Key Points

Large sunpad

Telescopic ladder

Large balconies

Exterior – Key Points



Exterior - Galley

Gran Turismo 35

Black corian worktop

Gas hob (standard)

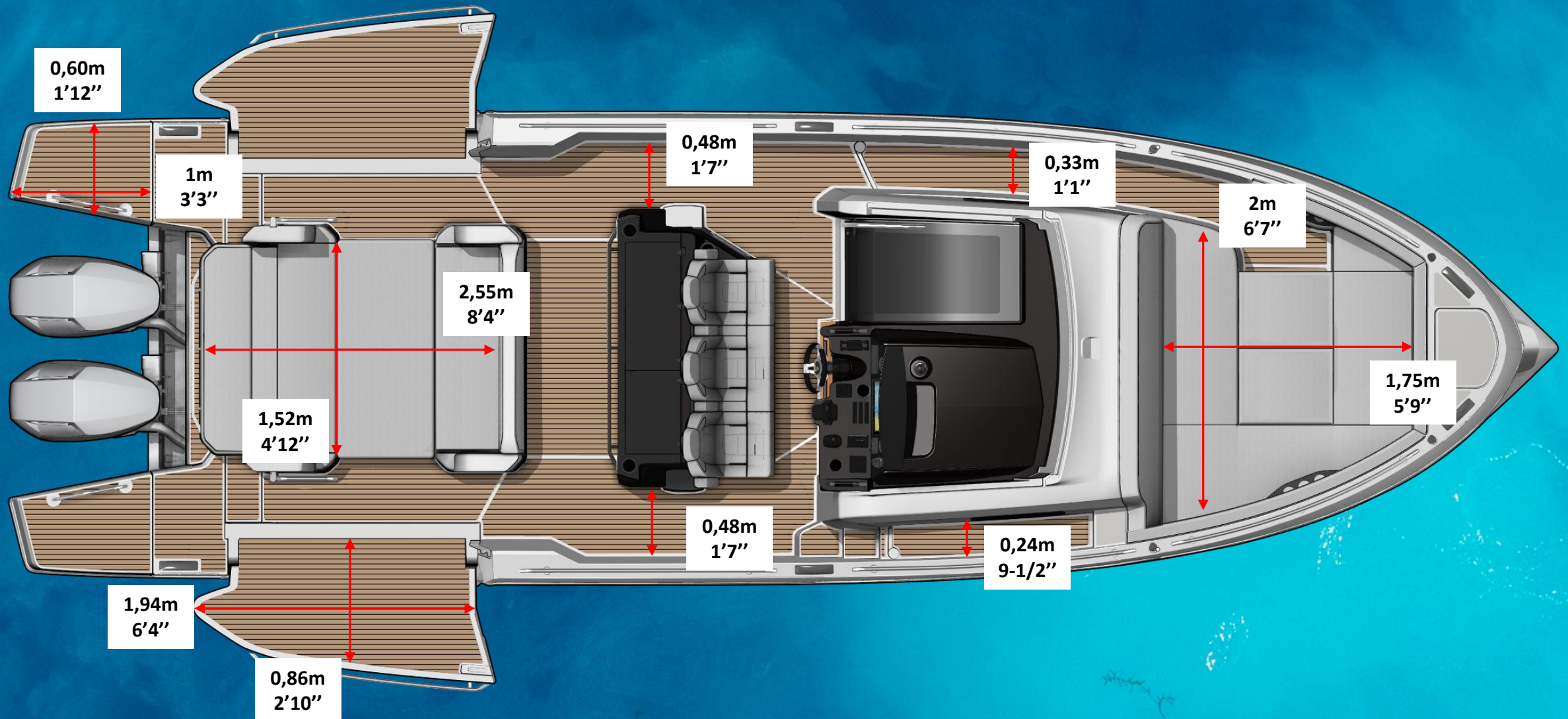
Storage

Fridge (49L)

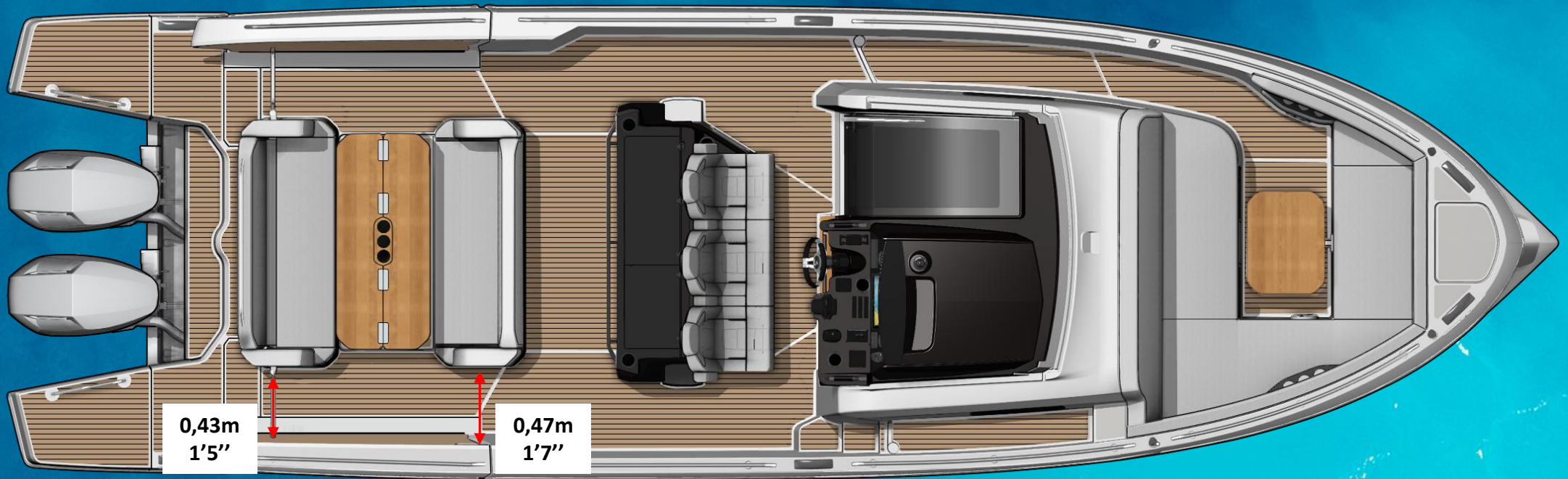
Black GRP galley with sink and tap

Large access door to lower deck

Exterior - Dimensions



Exterior - Dimensions



WHEELHOUSE



Wheelhouse – Pilot Station

Large and protective windscreen

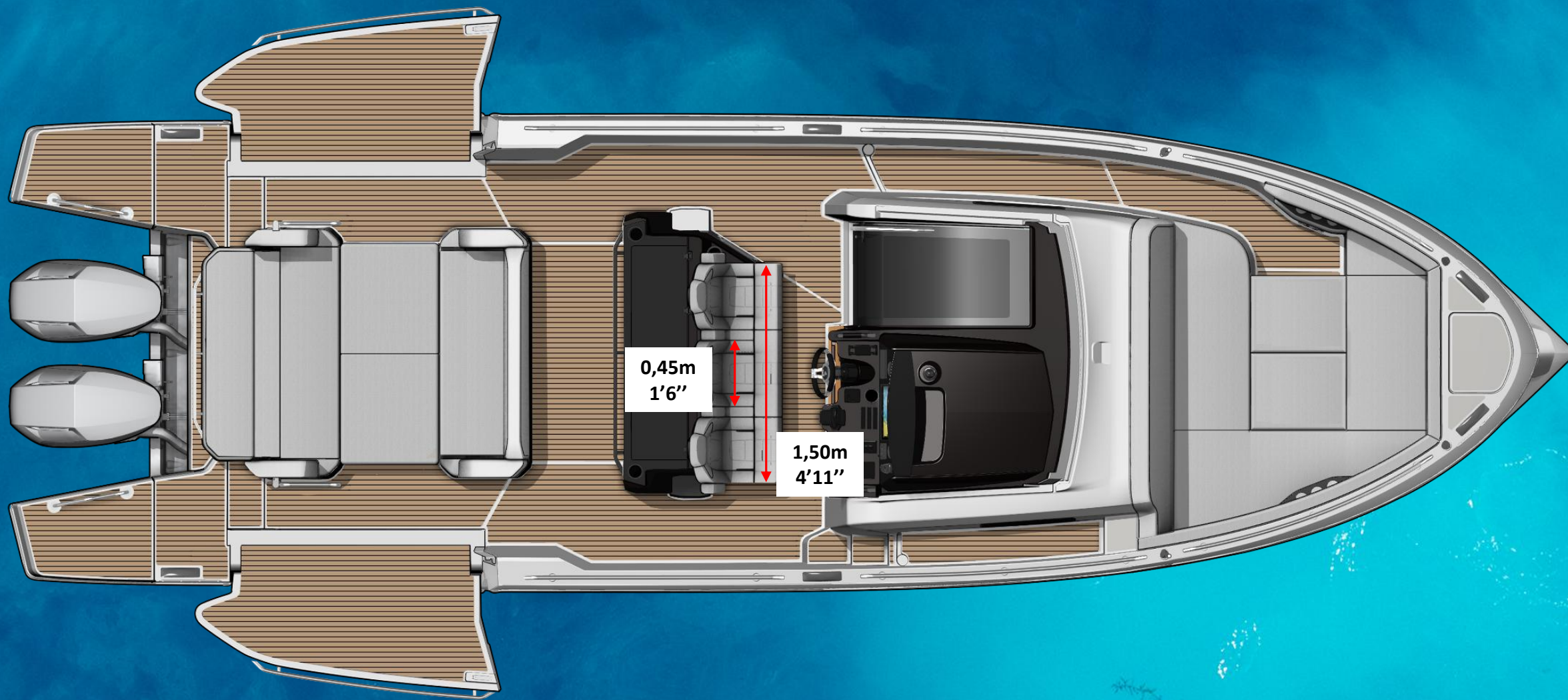
Full equipped pilot station (pack)

Airconditioning (option)

3 seats with
bolster system
and foldable
armrest

Retractable cleats

Wheelhouse - Dimensions



LOWER DECK



Lower deck – Salon / Cabin



Lower deck – Salon / Cabin

Prefit for 32" TV (option)

Large mirror

Ambient lighting

Infill cushion

Architectural stairs with LED

Opening window with
blinded curtain

Bottle rack

Microwave (trim level)

Additional 49L fridge
(option)

Storage

Shelves

Lower deck - Head



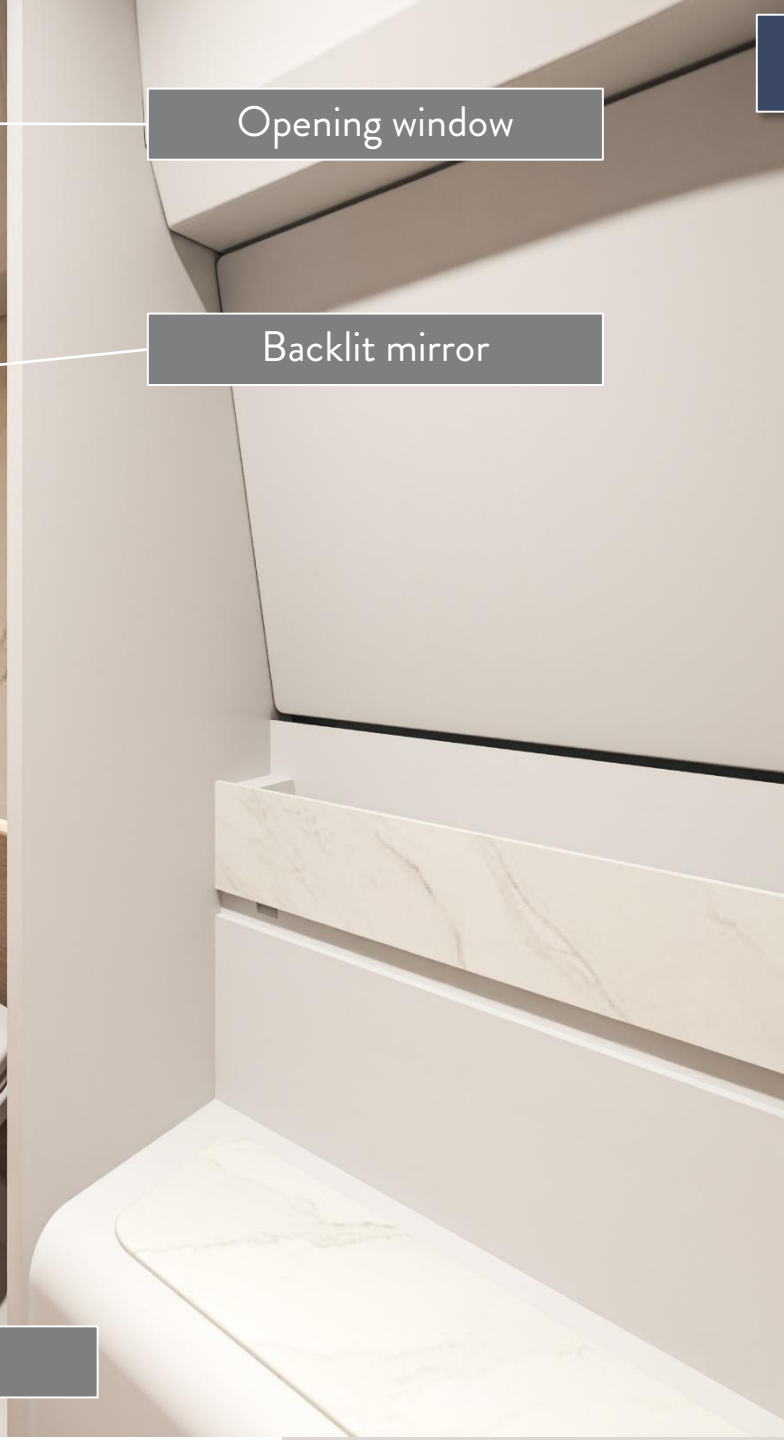
Worktop with LED illumination

Opening window

Backlit mirror

Shower with PMMA doors

Electric toilet



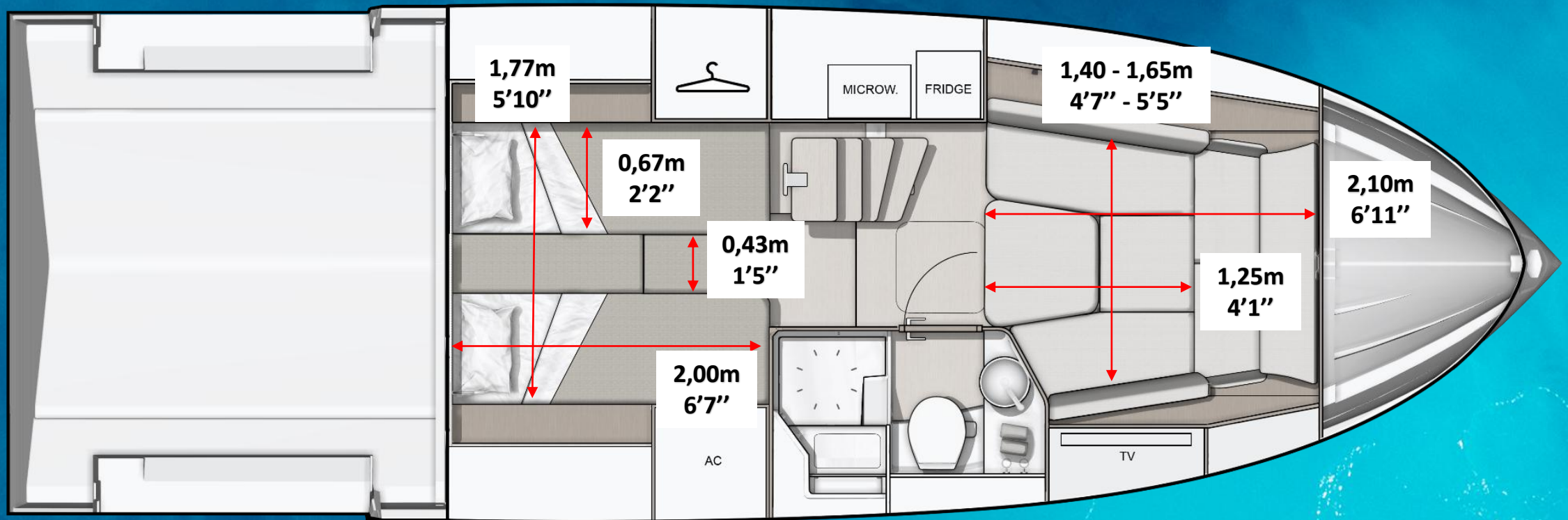
Lower deck – Mid Cabin

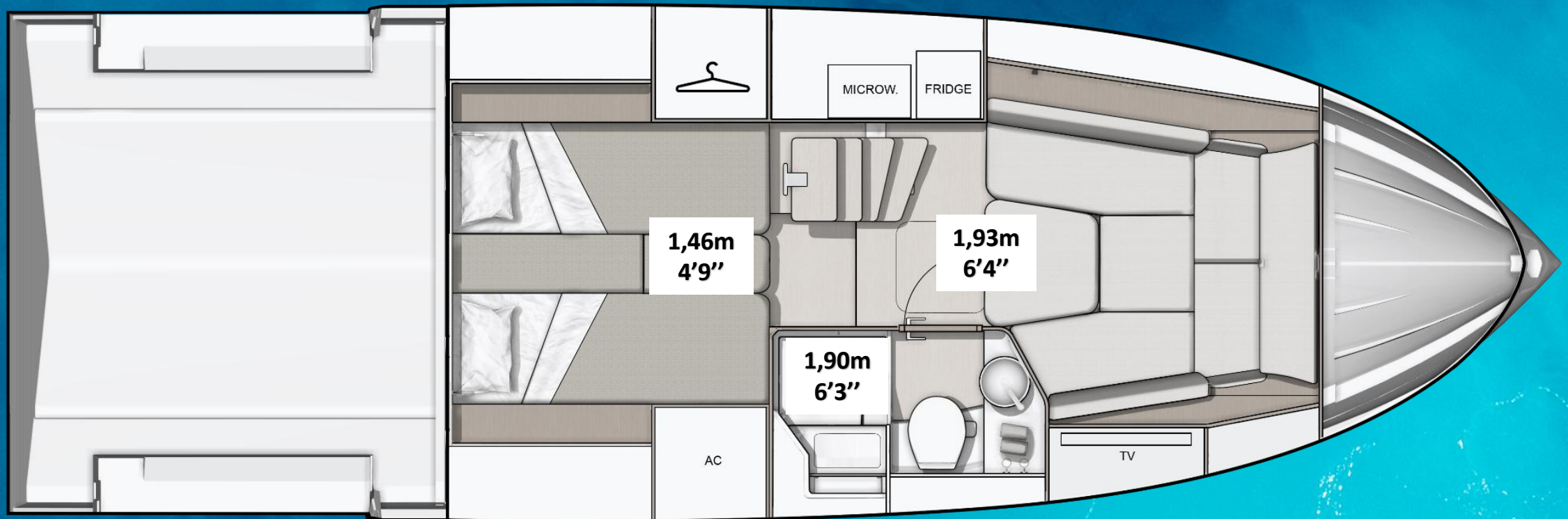
Reading lights with USB

Ambient lighting and décor panel

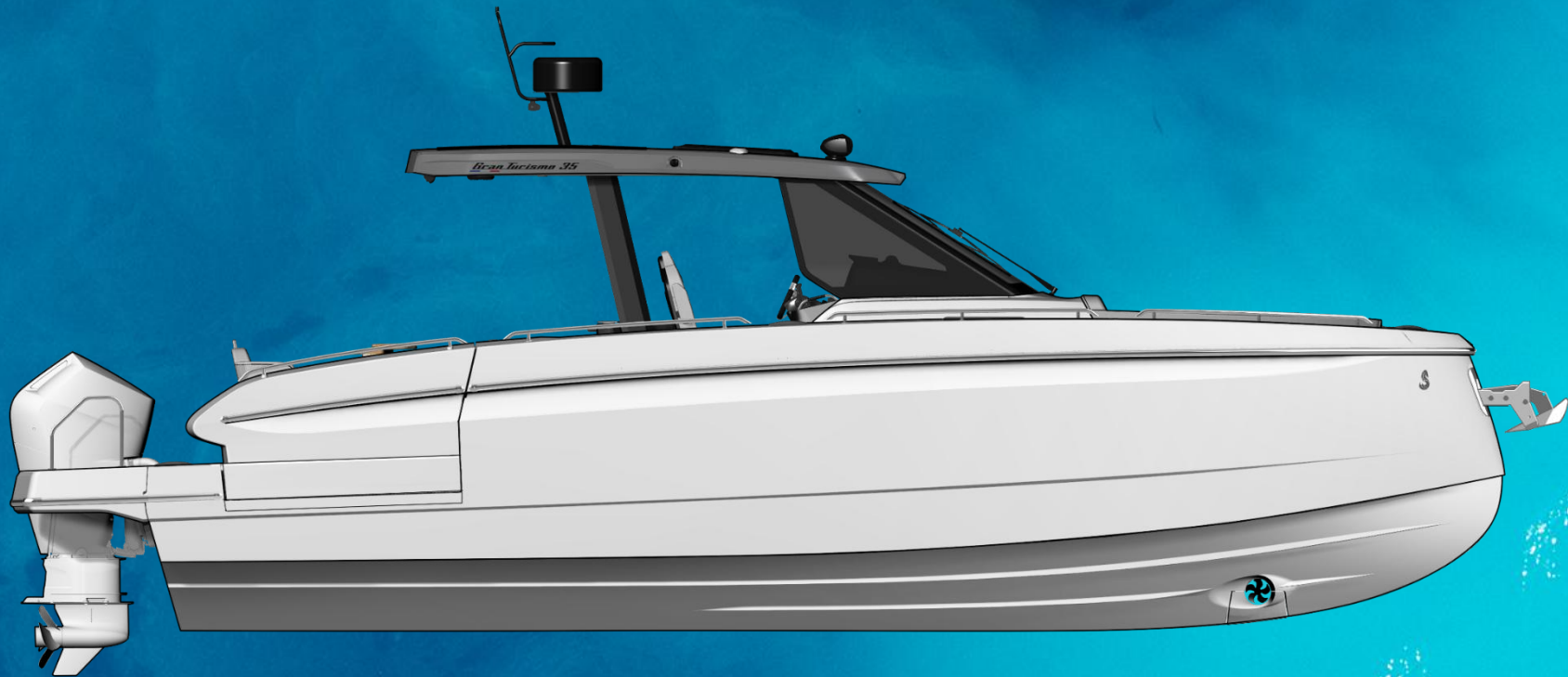
2 single bed or
1 large double bed

Wardrobe and storage



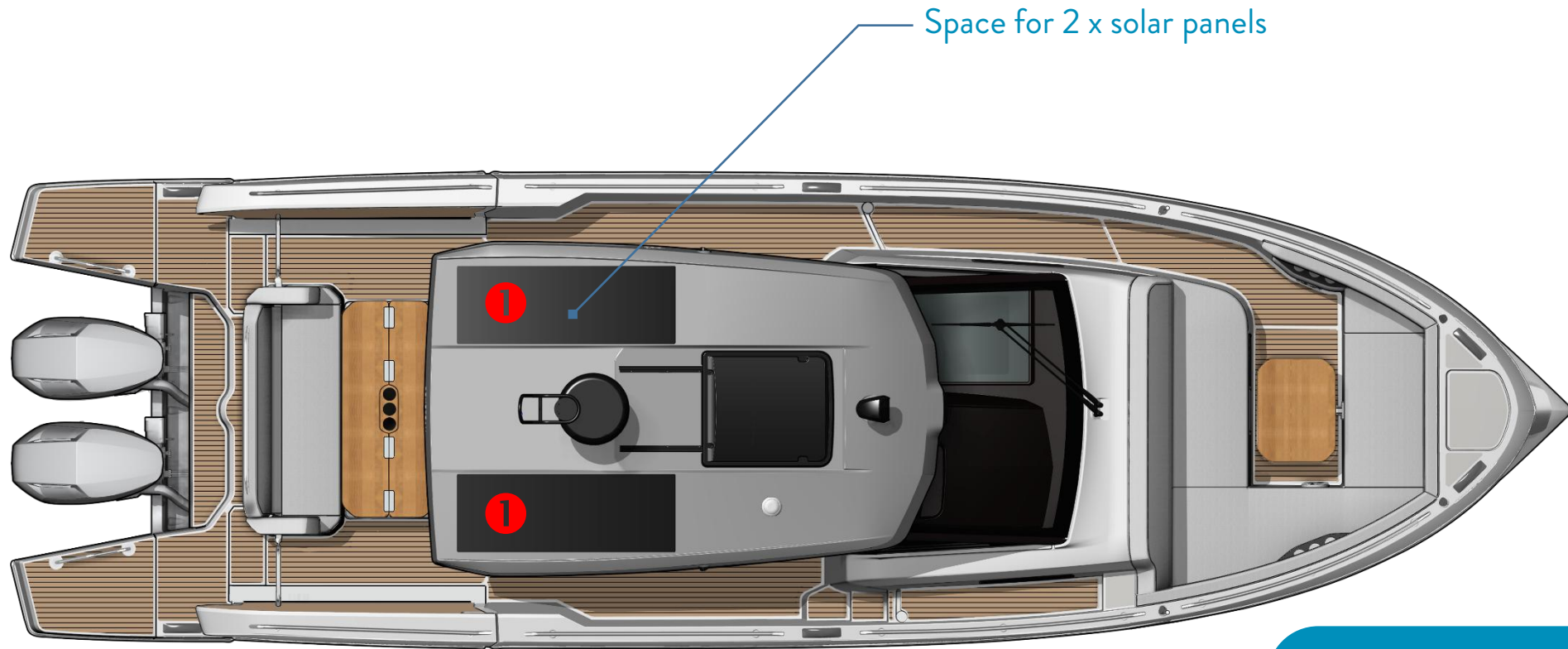


INNOVATIONS



- Solar panels, lithium batteries and inverter options
 - Light and sound pack Fusion HiFi & Lumishore lighting with hull « light blades »
 - Alpine Version

Solar panels, lithium batteries and inverter options



- ① - 2x 160w solar panels on hard top (-10% efficiency) = 288 wp
- Power bank: 3x Lithium batteries 12v 330 Ah (990 Ah total)
- Inverter 5KVA (12v)

“Silent boat” delivers up to 5* hours of on anchor autonomy without the need to run the engines or plug the shore power.

*PROVISIONAL FIGURES

NOT IN COMBINATION WITH GENERATOR OPTION

Light and Sound pack **LUMISHORE + FUSION** A Garmin Brand

The Lumishore lighting system, integrated through Garmin's OneHelm™, is a sophisticated marine LED lighting solution offering full customization, intuitive control, and seamless integration with existing navigation equipment.

Integration and Centralized Control

Plug-and-play connection: The Lumi-Link Command Center connects directly to Garmin's MFD via a single cable, simplifying installation and reducing clutter at the helm.

User-friendly interface: Access an intuitive control interface directly from the MFD screen, featuring a color wheel for selecting hues and sliders to adjust brightness and white balance.

Zonal lighting control: Manage lighting by specific zones on the boat, with customizable presets for different moods or activities.

Advanced Lighting Features

CRGBW multicolor lighting: Supports red, green, blue, warm white, and cool white LEDs, allowing complete ambiance customization.

Dynamic modes: Includes pre-programmed effects like strobe, color sweep, color cycle, and a unique "Sound-to-Light" mode that syncs lighting with music.

Customizable scenes: Create personalized lighting scenes for various onboard experiences, from entertaining to relaxing.



Premium Fusion Apollo Unit + 8 premium speakers + Subwoofer RGBW
Indirect Lumishore lighting for hull
Underwater lights

Indirect Lumishore lighting for cockpit and foredeck (trim level)

Alpine Version



Alpine Design & Finishes:

Interior/exterior upholstery: Skai Light Grey & Navy Blue, embroidery + Alpine logos
Matching driver/copilot seats + Alpine Isotta Fanete steering wheel (Skai + Alcantara)

Elegant black ambience :

Black lacquered kitchen furniture (RAL 9005)
Black hardtop with Alpine logos and decoration
Black taps, washbasin, handles, pushlock
Black details: handrails, table legs, cleats, cup holders, liston, gates

Lighting & hull:

Spot and courtesy lighting, 100% black
Gelcoat hull Silver Grey + Alpine decoration



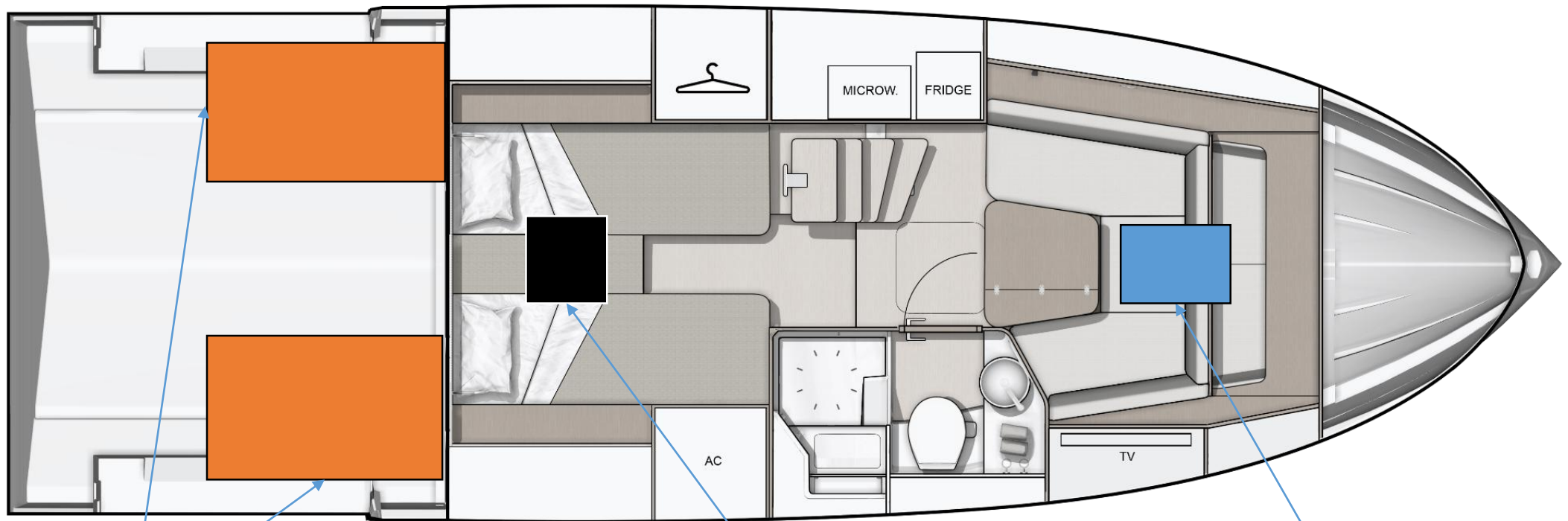
TECHNICAL



MOORING ANCHORING KIT

Chain lenght	28 m	91'10"
Chain diameter	10 mm	½"
Anchor weight	16 kg	35 lbs
Rope length (4)	18 m	59'1"
Rope diameter	16 mm	5/8"
Inflatable fender dimensions with covers (6)	635 x 200 mm	2'1" x 8"

TECHNICAL EQUIPMENT LOCATION



Gas tank

(EUROPE : 2 x 370 L - US : 2 x 413 L / 2 x 109 US GAL)

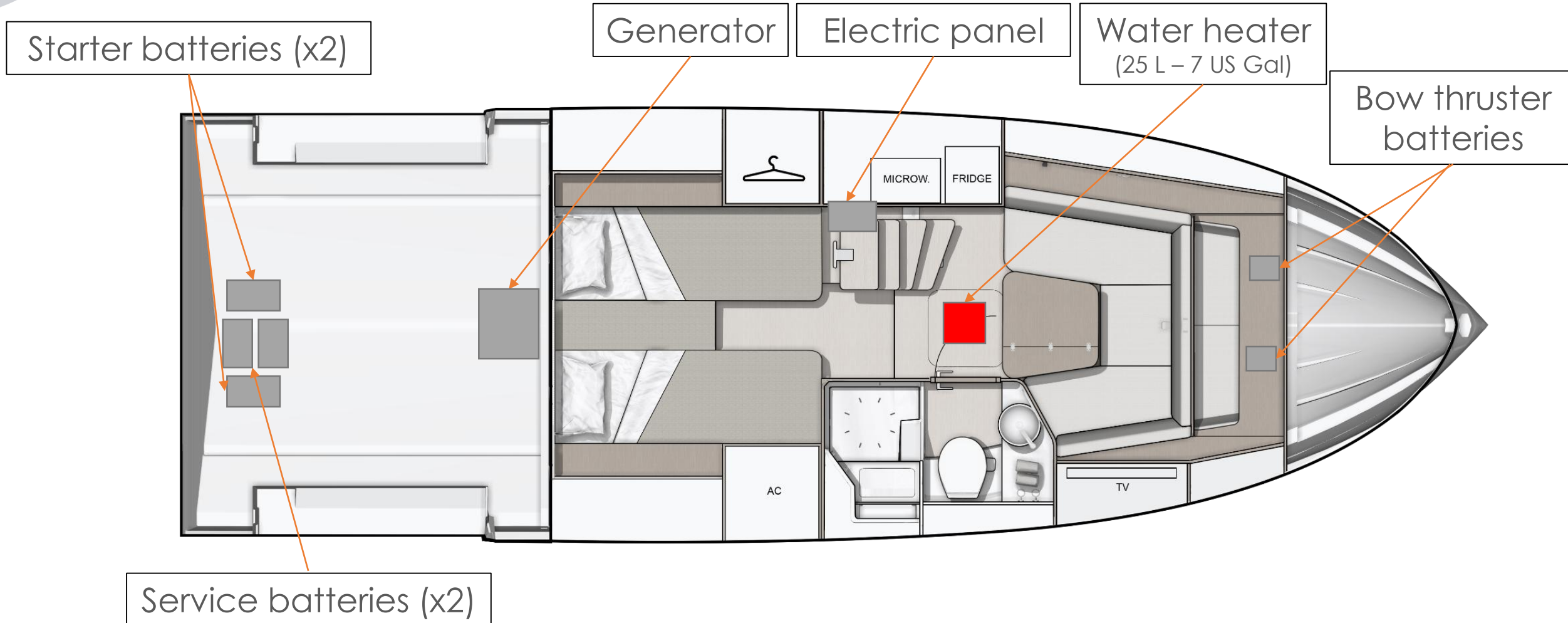
Black water tank

(80 L - 21 US GAL)

Water tank

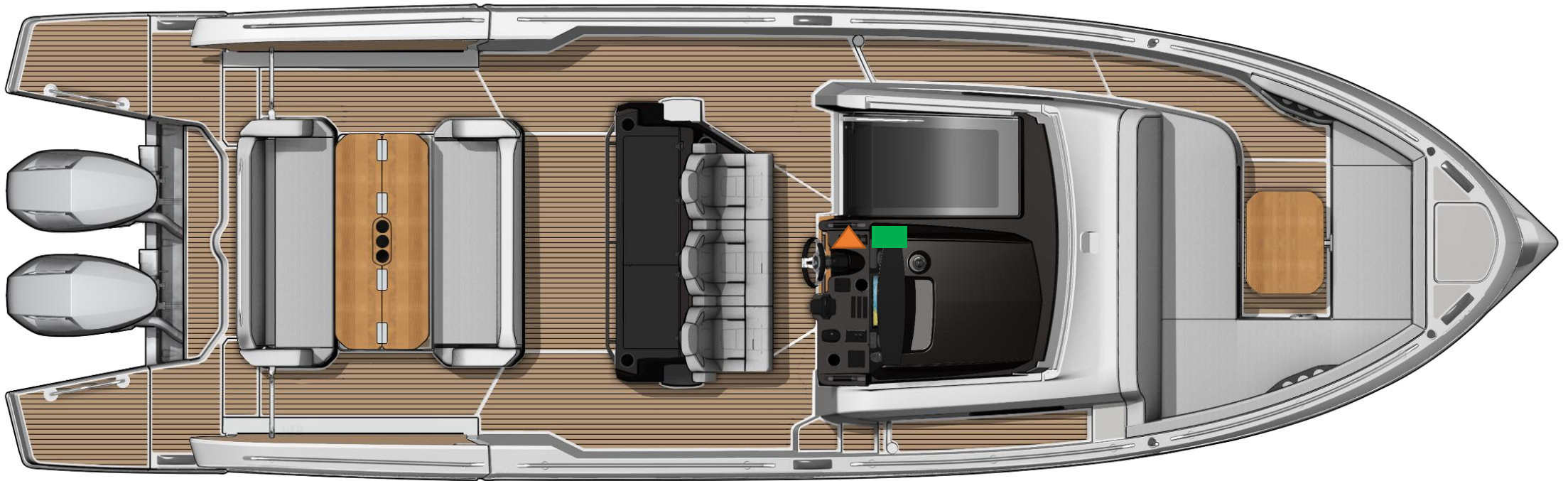
(160 L - 42 US GAL)

TECHNICAL EQUIPMENT LOCATION



ELECTRICAL & USB OUTLETS

MAIN DECK

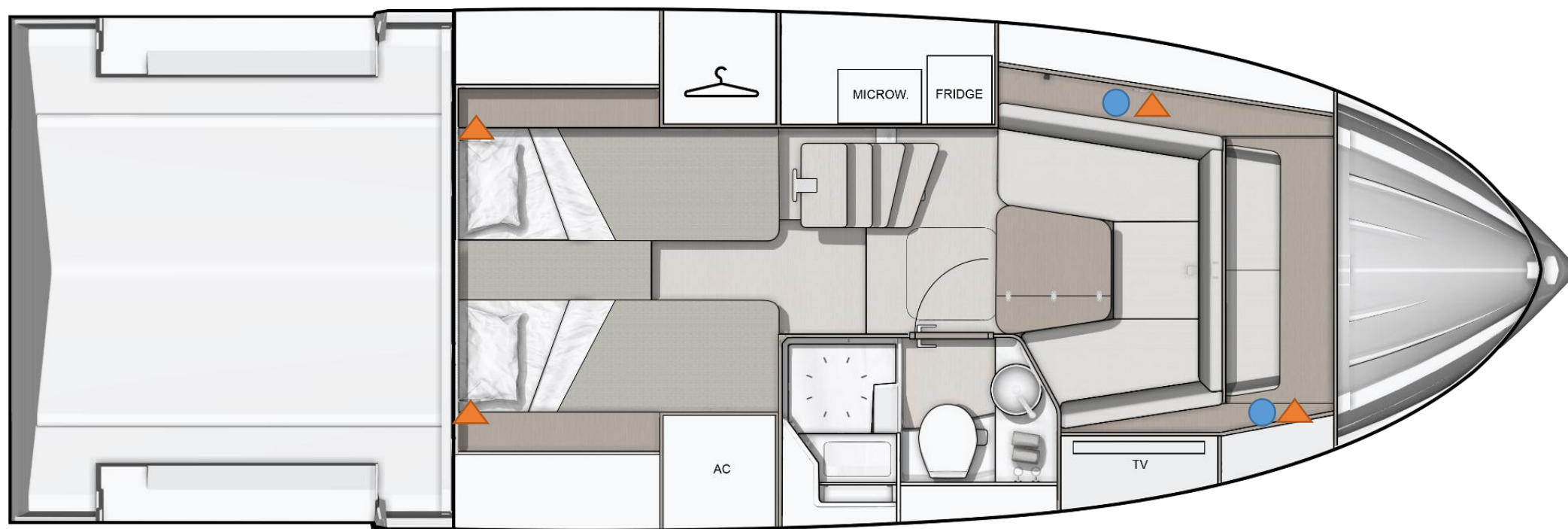


- Induction charger
- Electrical outlet
- ▲ USB outlet

ELECTRICAL & USB OUTLETS

LOWER DECK

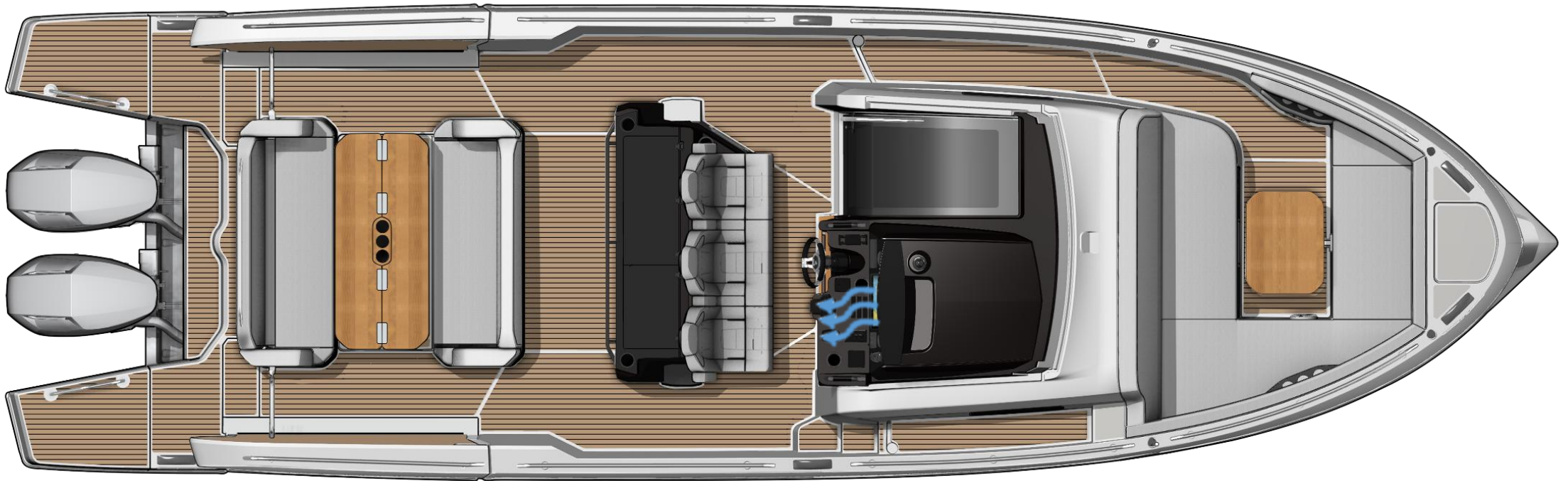
TECHNICAL



● Electrical outlet

▲ USB outlet

AIR CONDITIONING MAIN DECK

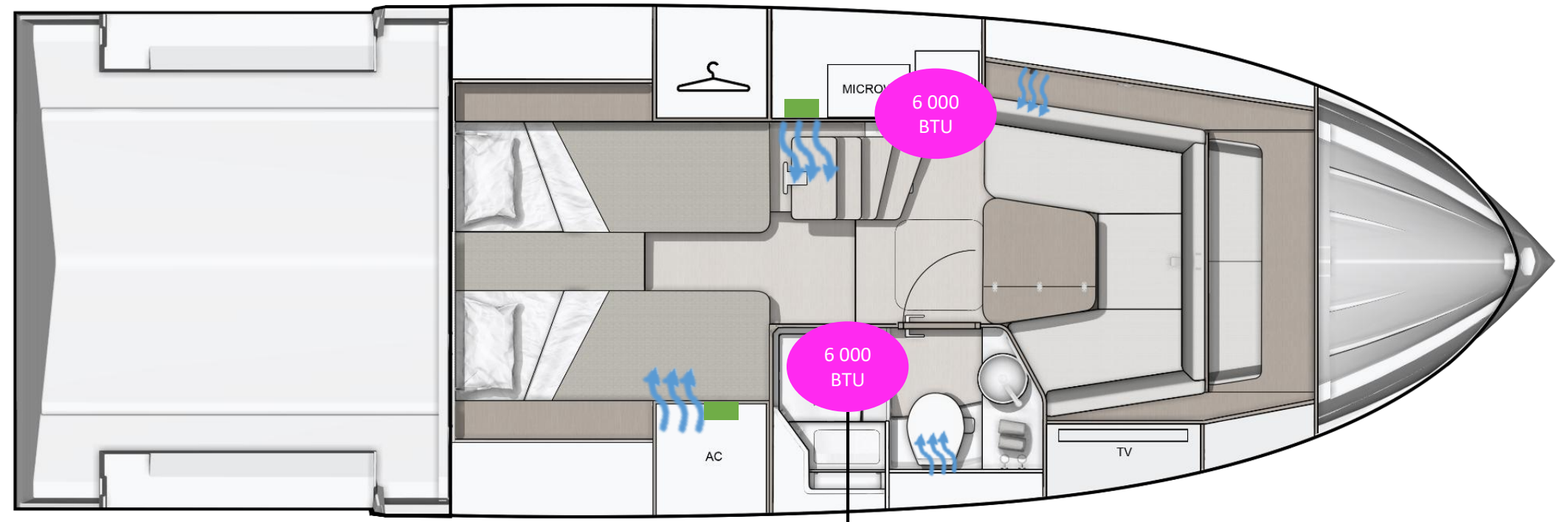


 A/C Vents
 Control

TOTAL:
12 000
BTU

Reverse cycle air conditioning

AIR CONDITIONING LOWER DECK



To the pilot station

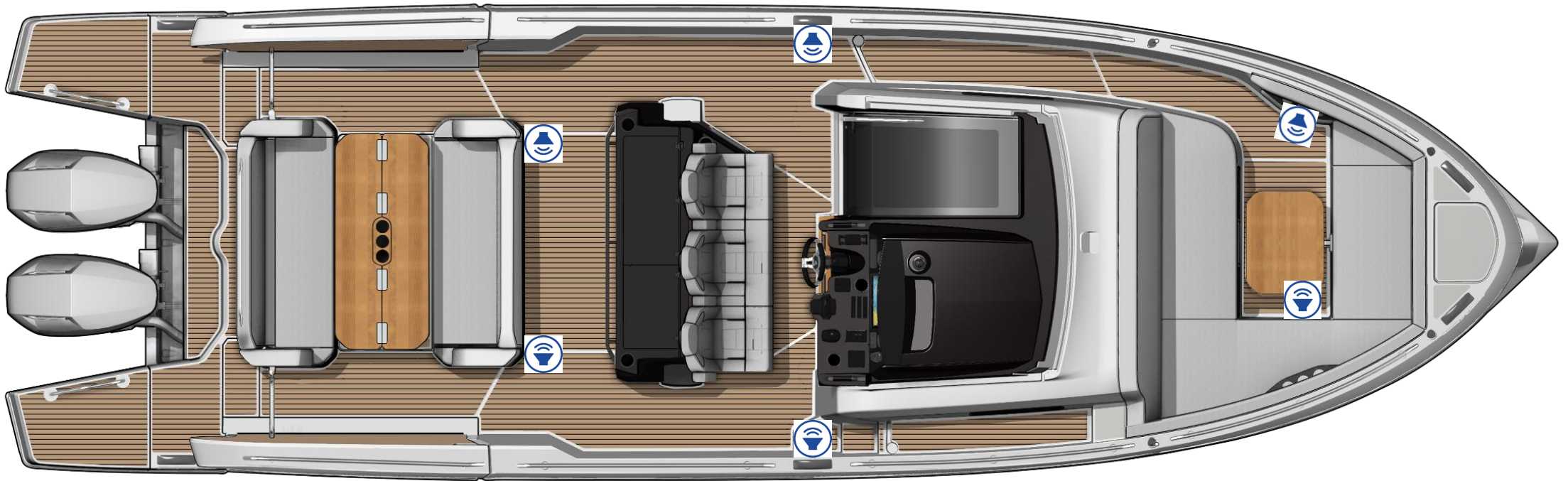
TOTAL:
12 000
BTU

Reverse cycle air conditioning

 A/C Vents
 Control

AUDIO VISUAL

MAIN DECK – PACK SOUND



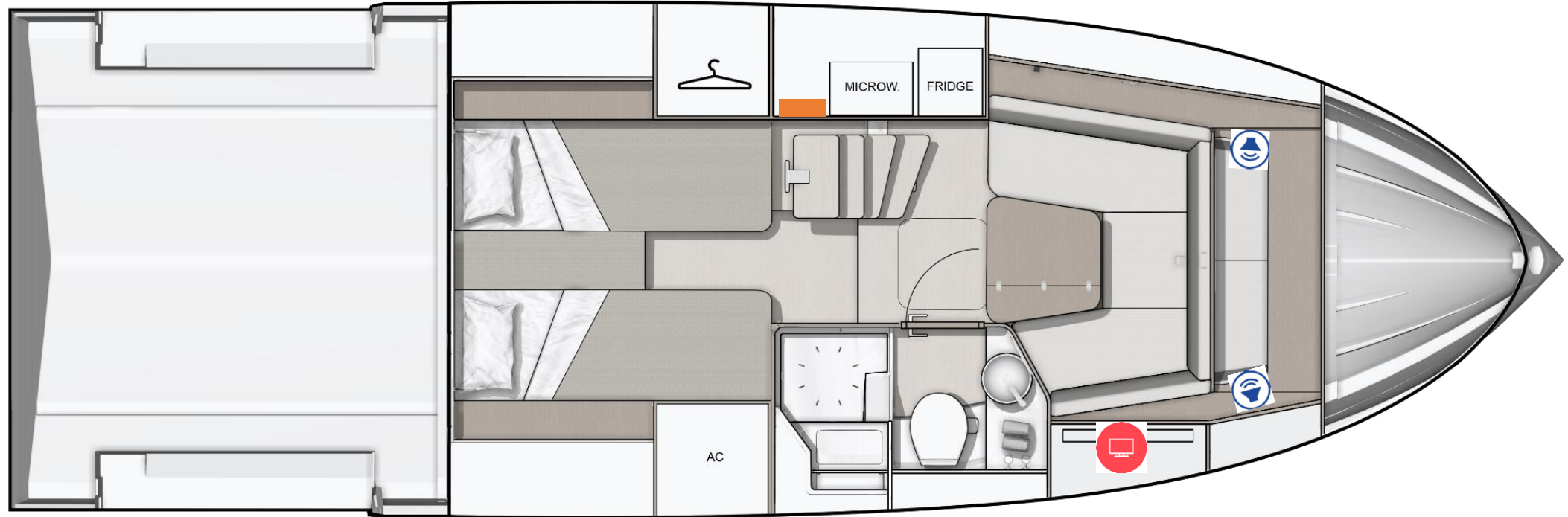
Speakers



Fusion unit

AUDIO VISUAL

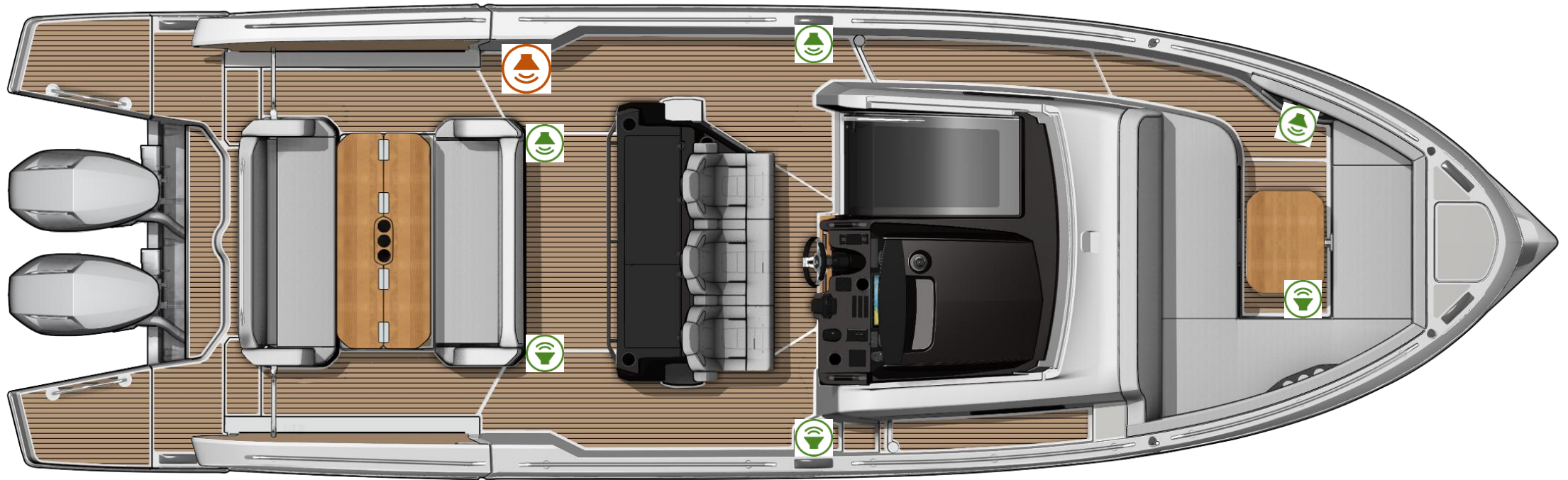
LOWER DECK – PACK SOUND



-  Speakers
-  Fusion unit
-  TV emplacement
(MAX VIP CABIN TV SIZE: 32")

AUDIO VISUAL

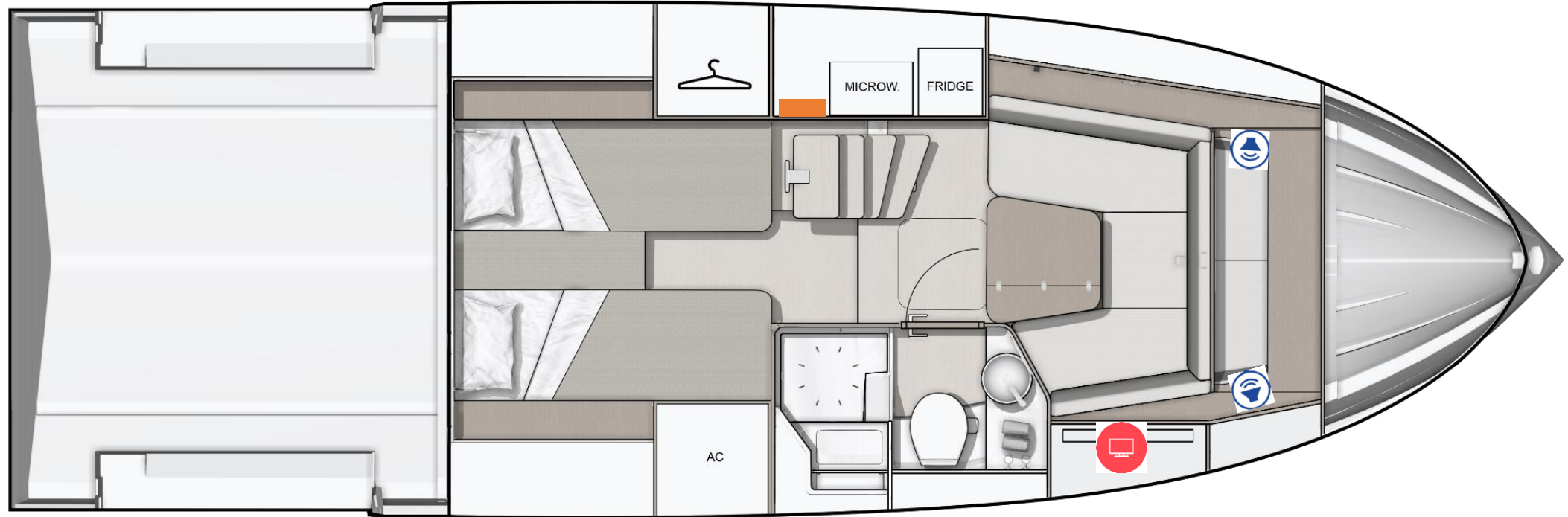
MAIN DECK – PACK LIGHT & SOUND



-  Speakers
-  Fusion unit
-  RGBW Premium Speakers
-  RGBW Premium Subwoofer

AUDIO VISUAL

LOWER DECK – PACK LIGHT & SOUND



Speakers



Fusion unit



TV emplacement
(MAX VIP CABIN TV SIZE: 32")



PROVISIONAL SPECS

Air draft light load

Draught full load

PERFORMANCE

Performance under validation