

SAXDOR

YACHTS

The new era of boating



SAXDOR 320 GTO

SAXDOR 320 GTR

Luxury style without luxury price

The Saxdor 320 GTO and GTR are walk-around deck, the Saxdor 320 GTO with a T-top while the Saxdor 320 GTR provides an open-air space where you can enjoy the sun to its fullest. The models cutting edge design not only looks a million dollars but boasts a level of performance, sophistication and luxury to match. The fact that prices start at a mere €96,360, including a state of the art 300hp Mercury V8 Verado engine and a multitude of standard features rarely found on craft costing less than €500,000 only serves to reinforce our stated goal.



The starting point for any great boat is a world-class hull and the 320 GTO's vacuum infused twin-step moulding has a plumb bow and narrow beam to help it cut through the waves with effortless ease. Even with the single 300hp engine it will comfortably reach 40 knots while options up to twin 300hp Verados push this beyond 50 knots.

When you reach your destination, the brilliant cockpit design really comes into its own. The standard fit twin electric folding side terraces drop down to create an unrivalled connection with the sea, while its versatile seating layout can be configured as a sociable dinette, a huge sunpad or three separate rows of forward facing seats.



A revolution in outboard-powered sportboats

With a large wetbar also included as standard as well as a second permanent forward sunpad and stylish hard top, the GTO wants for nothing. And that's before you take into account the comfortable forward cabin and separate ensuite bathroom below decks.

It's this refusal to accept conventional thinking along with the constant pursuit of perfection that allows us to build genuinely innovative craft that appeal to original thinkers and boat enthusiasts alike.







Safe passage and freedom to move around

The safe passage throughout the boat is one of our core values. The high sides of the boat add extra safety for passengers while walking around the deck.

The main deck includes clever opening side terraces, an aft sun pad with sliding backrest, wetbar, integrated hand rails, and fixed side wings. The cockpit is benefited by the side terraces for leisurely anchoring activities, and the T-top provides ample sun coverage over the wet bar and helm. Twin chart plotters with echosounder, Mercury JPO joystick control, and a bow thruster complement the captain's needs, and a Fusion Audio 4 speaker system serves

for guest entertainment. The wraparound windscreen is smartly designed for high-speed open water conditions, and the sunshades for and aft provide additional shelter as needed while at rest. An extended sunpad rests on the foredeck and the dinette converts into a sunbathing space via flip-up backrests. The bow also holds an integrated anchor and windlass to maximize the available space up front.







SAXDOR|320|GT0



“It is not just the pace of the Saxdor 320 GTO that impresses, it is the composure. The hull never feels remotely flustered or overpowered. When driving fast speed in nearly perfect weather, with just a slight ripple to break the surface tension, and allow the slender forefoot to cleave through the water cleanly but effortlessly”



“A spacious lounge area is a great place to relax and socialise while the deep walk around aisle on anti-slip soft deck floor make the Saxdor 320 GTO exceptionally safe for families with young children”





SAXDOR 320 GTR



*“The Saxdor 320 GTR, 45+ knots, 9 passengers,
supreme comfort and sensational to drive”*







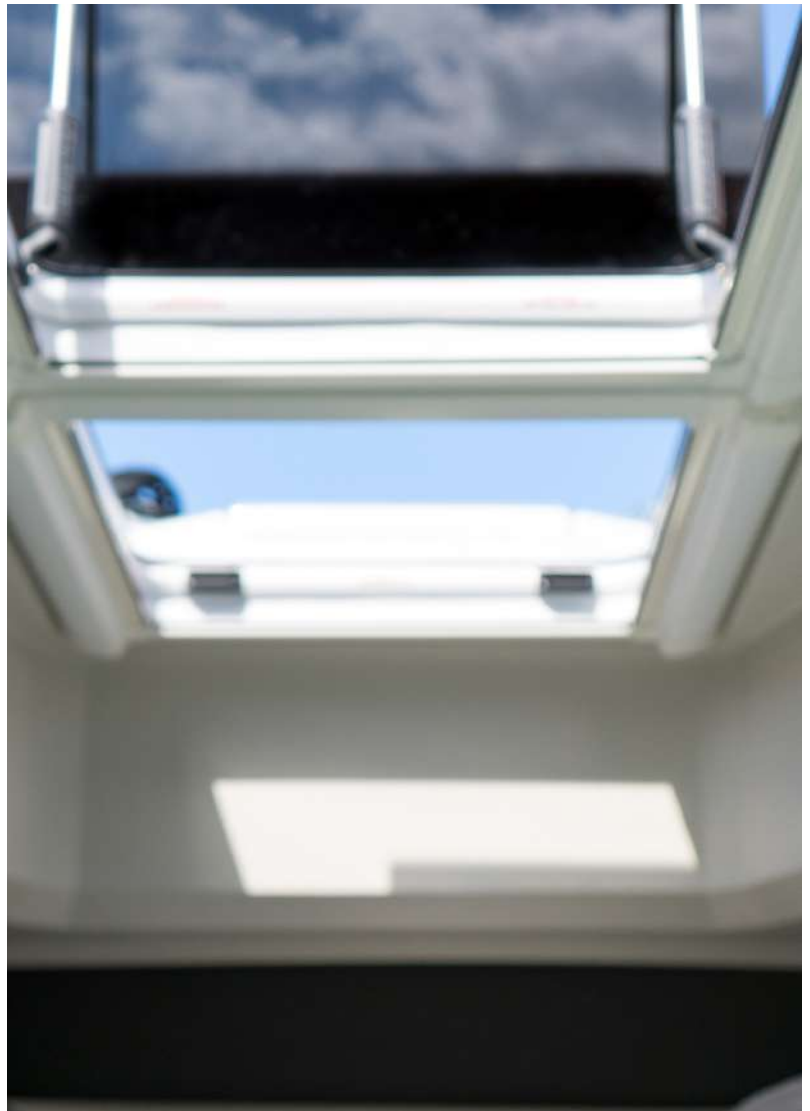
"The Saxdor 320 is ideal for the al fresco life, with many options for 9 people to lounge, sunbathe and party. The transformable side-terraces are included in the standard package"



Living on board

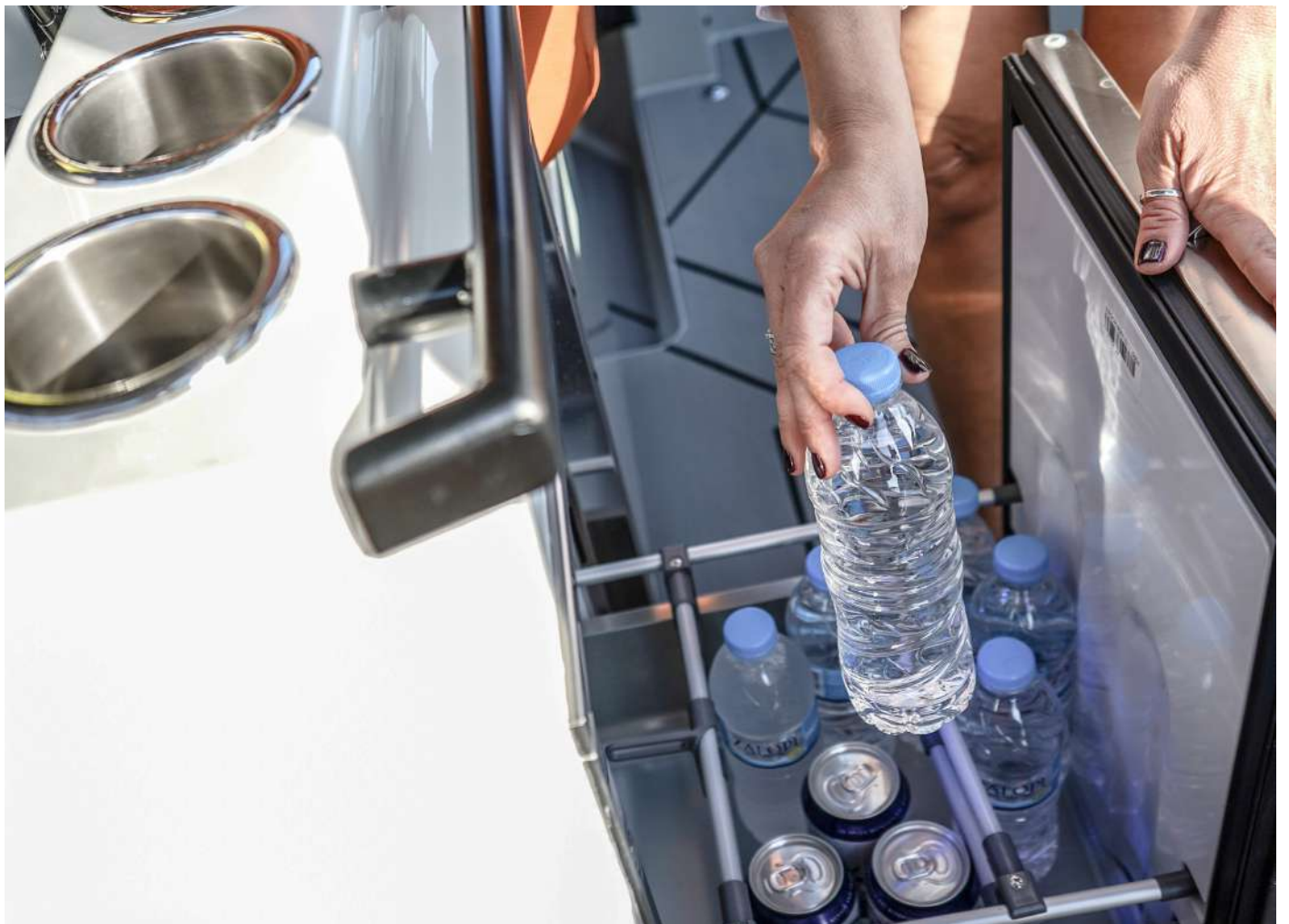
With a large wetbar also included as the optional package. The below decks the 320 GTO and 320 GTR boasts a standard spacious double cabin with separate head, making it both a slick dayboat and an ideal weekender. The fixed double berth has enough headroom to sleep or sit upright, and the separate head has standing headroom, both admirable features for a boat of its length that will also aid movement and comfort for varying users.

The Saxdor 320 GTO and 320 GTR offer the swimming ladder which make the access to the boat easier after a dip into the water. The amazing number and quality of world-class features that we've seamlessly fit into a 32-foot boat – without things feel cramped – makes this boat unique in the world.















SAXDOR 320 GTO

SAXDOR 320 GTR

Specification

Beam: 3,10 m

Overall Length :10,28 m

Passengers: 8 persons

Fuel Capacity: 450 liters

Max engine power: 600 hp

Max speed range: 45kts

Fresh water capacity : 100 liters

Black water capacity : 60 liters

Grey water capacity: 40 liters

Classification: ISO Cat. C, ABYC

Construction:GRP

Max load: 1950 kg Max draught: 0,94m (3,084 ft)

*Optional packages





The starting price with a single 300hp Mercury V8 outboard is 96 360 €. To secure your boat contact your local Saxdor dealer.*

**excl. VAT and other applicable taxes and costs such as handling, freight and delivery.*

Technical information & Equipments

STANDARD

- Electric opening side terraces
- Aft sunbed with sliding backrest facing aft-bow, storage underneath
- Sun deck in front"
- Wet-bar module
- Integrated handrails on deck"
- Fixed side wings for easy side boarding"
- Telescopic bathing ladder"
- Hatches on front deck for easy access"
- 2 x Flush mounted hatches"
- Handles and cleats"
- Quick fender release system"
- Anti-skid finishing on decks and hatches"

TECHNOLOGY

- Power steering with adjustable steering wheel
- Mercury VesselView Mobile
- Mercury Active-Trim
- Wireless charging and 12V outlets
- LED Navigation lights
- Bilge pumps, electric and manual
- Fixed fuel tank with sensor
- Fire extinguisher storage with fire port

COMFORT

- Extendable table with adjustable height
- Comfort and reading lights
- Front cabin comfort mattresses
- Carpets in front cabin
- LED interior lights
- Toilet with sea water flush and black water tank
- Mirror in front cabin
- Front deck and wet bar cup holders
- Hull stickers
- Leather steering wheel
- Cup holders in console and for passengers
- Glass holders on console
- Roof vents in front cabin
- Horn
- Saxdor documentation bag

And optional packages (view price list or visit www.saxdor.com)

ENGINES



Mercury V8 AMS 300hp
Verado outboards provide sensational power from a rock-solid V8 4.6-litre powerhead that delivers exhilarating acceleration and top speed.



Twin Mercury V6 CMS 225hp
The V-6 Mercury® FourStroke is high tech without high stress – reliable, durable, and strong.



Twin Mercury V8 AMS 300hp
Verado outboards provide sensational power from a rock-solid V8 4.6-litre powerhead that delivers exhilarating acceleration and top speed.

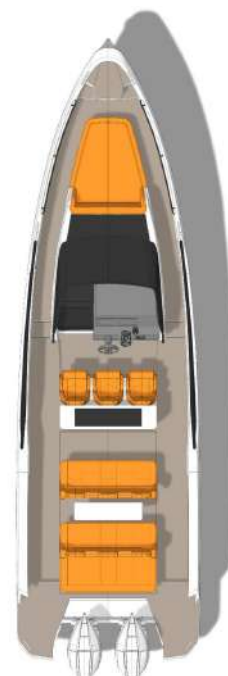
Layouts



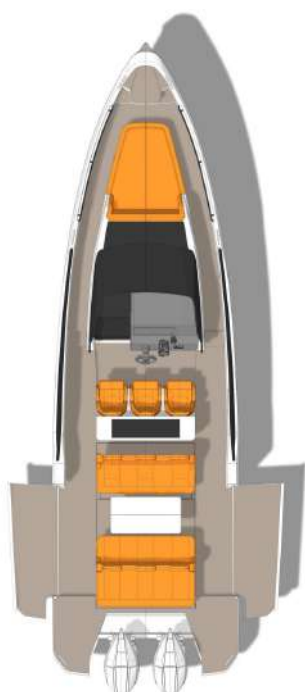
With roof



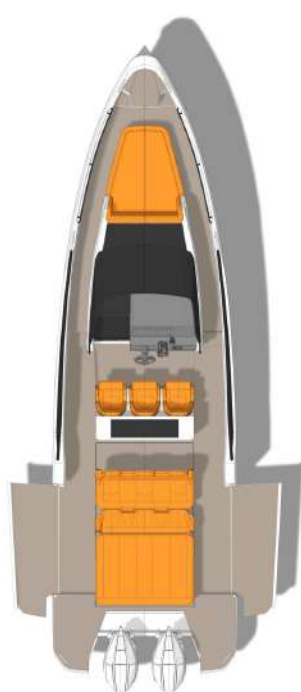
Without roof with the dinette



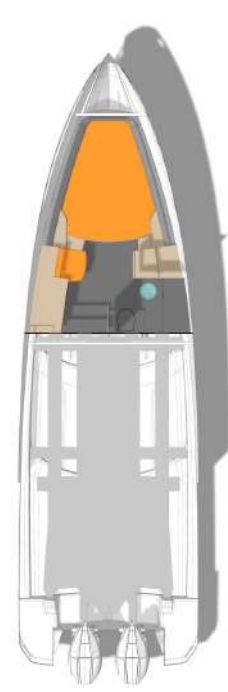
Bench backrest folded



Dinette with side terraces open



Sunbed with side terraces open



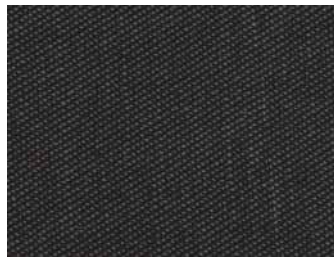
Front cabin

Design selections

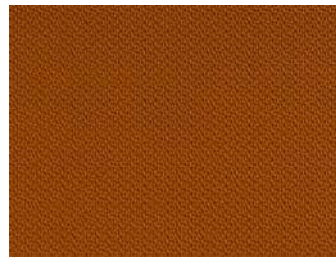
Standard design package with basic white hull



Seats and upholstery



Sandstone Gravel

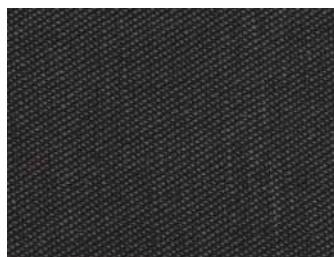


Silververtex Cobre

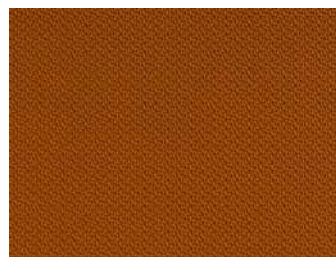
Cobre design package with satin white aluminum hull foil



Seats and upholstery



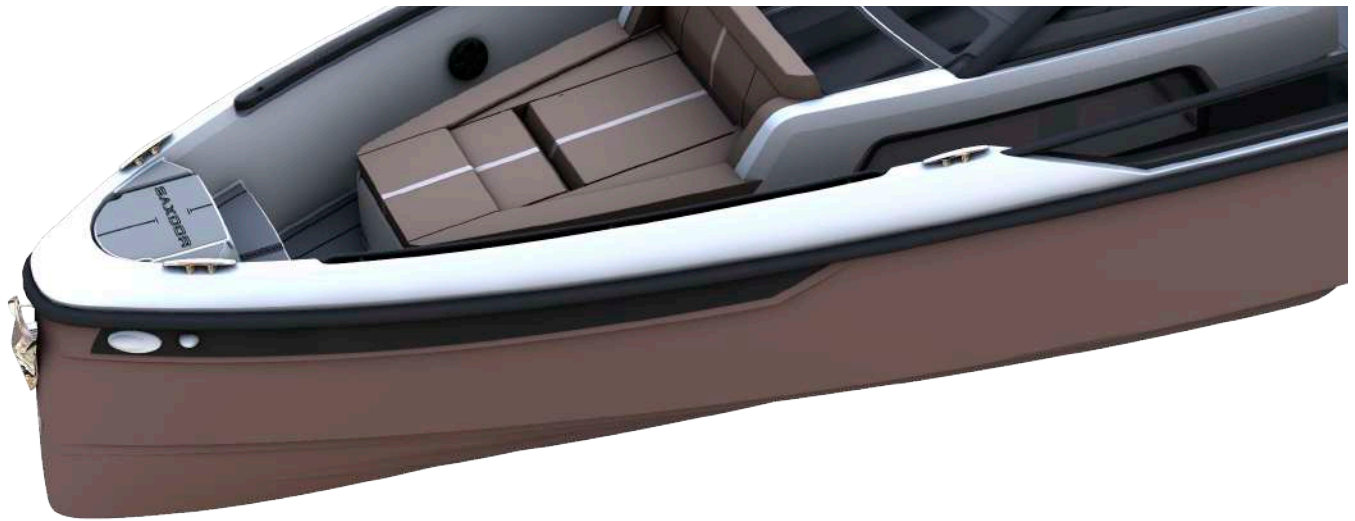
Sandstone Gravel



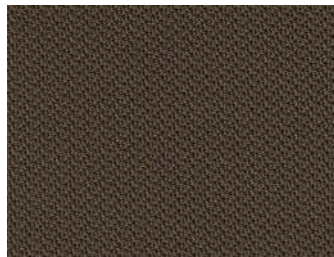
Silververtex Cobre

Design selections

Sand design package with matte brown metallic hull foil



Seats and upholstery

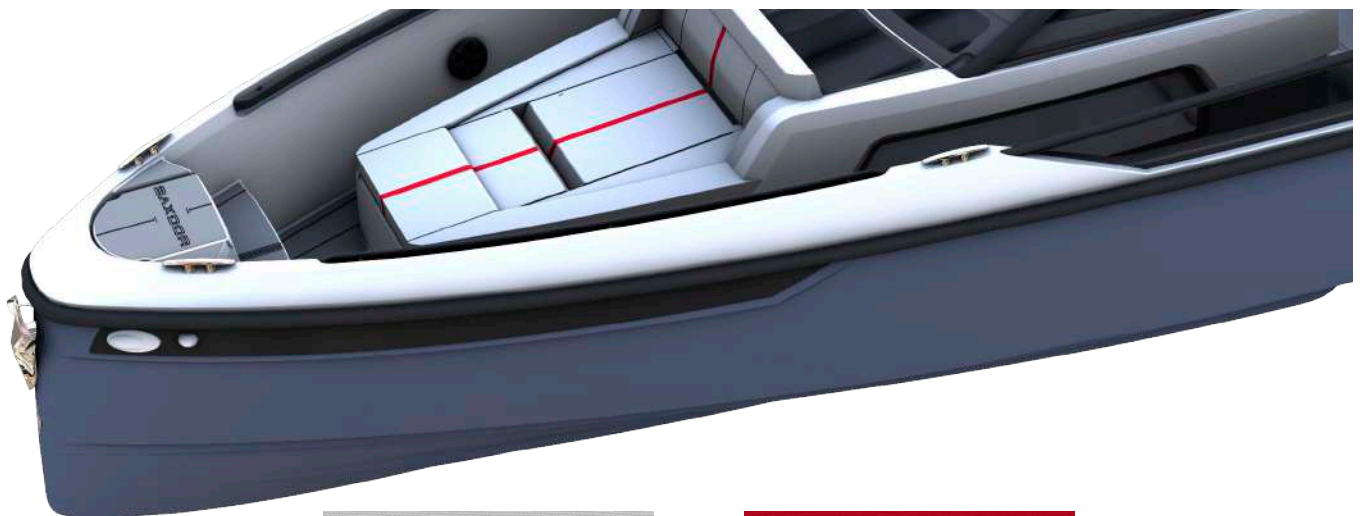


Hitch Neutra

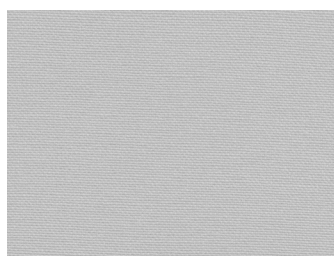


Sandstone Oyster

Red line design package with grey hull foil



Seats and upholstery



Silvertex Aluminium



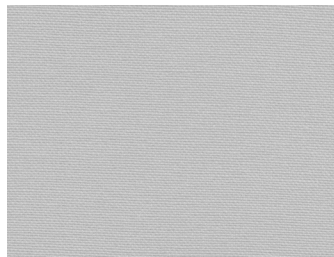
Silvertex Grenadine

Design selections

Blue line design package with matte slate blue metallic hull foil



Seats and upholstery



Silververtex Aluminium



Silververtex Delft





Watch video of Saxdor 320 GTO on the water at
www.saxdor.com or scan the QR code











SAXDOR 320



SAXDOR 320



SAXOP



MERCURY

WARNING









FIND OUR DEALERS AT : WWW.SAXDOR.COM

SAXDOR
YACHTS